



MOAC Curator & Collections Manager Ingrid Hedcock prepares wallpaper from Margaret Olley's bedroom for this month's still life challenge.

---

## UNLOCKING MARGARET'S HOUSE

# STILL LIFE CHALLENGE: WALLPAPER

---

**Welcome to the third still life challenge giving special access to the objects that inspired Margaret Olley. On the first Sunday of each month, we will 'unlock' Margaret's House and bring to you a composition from her collection of objects.**

Margaret Olley filled her home studio with objects that she collected as subject matter for painting. With her once ever-changing home studio now a static re-creation, we love to explore opportunities to enliven this space and return it to its role as subject matter; as inspiration for artists.

On the first Sunday of each month, we will continue to bring to you a composition from her collection of objects, and invite you to make a work in response as part of our Gallery At Home program. Whether it is through painting, drawing, 3D, mixed media or photography – we want to see how you respond to the challenge. Don't forget to share your creations on social media with the hashtag **#unlockingmargarethouse**.





Margaret Olley (1923 – 2011), *Bedroom still life* 1997, oil on board, 61 x 91cm  
 Maitland Regional Art Gallery Collection  
 Purchased by the Art Gallery Society, 1998  
 © Margaret Olley Art Trust

Our third challenge is inspired by the painting *Bedroom still life*, 1997. In this painting Olley has used wallpaper to form an intriguing background. Far-reaching branches, flowers and butterflies frame the mirror that captures Olley's reflection, turning this still life into a self-portrait. This striking, hand-printed wallpaper that lined her bedroom walls is the focus of this month's challenge. *Bedroom still life* 1997 will be on display at the Maitland Regional Art Gallery in the exhibition *Hello Again...it's nice to see your face*, 8 August 2020 – 14 February 2021.

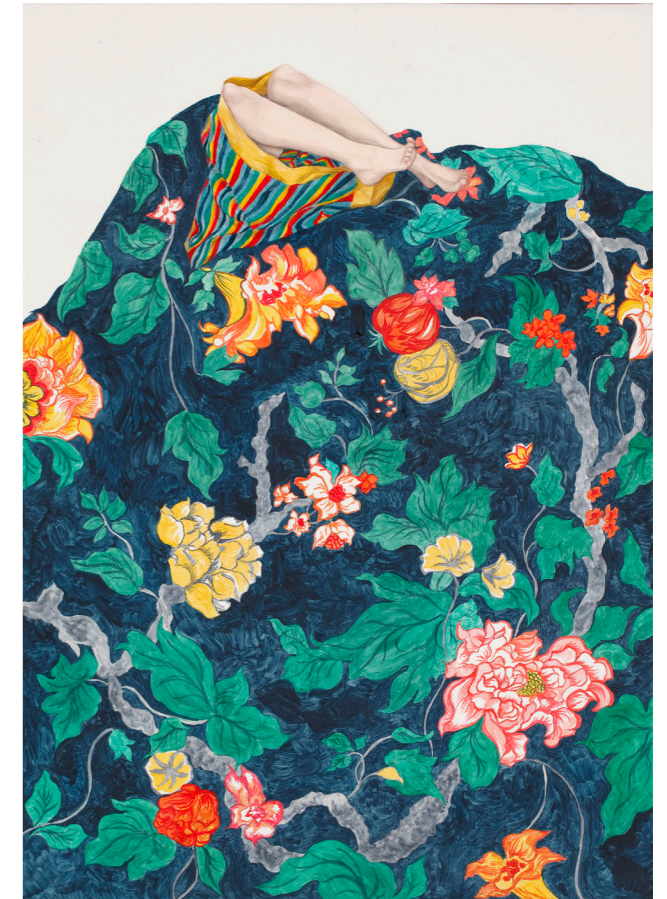


LEFT Margaret Olley's decorative red box featured in a number of her paintings and has been included in this month's still life challenge

OPPOSITE PAGE TOP Monica Rohan (b.1990), *Swallowed* 2014  
 oil on board, 49.8 x 34.9cm, Tweed Regional Gallery collection  
 Gift of the Friends of Tweed Regional Gallery and Margaret Olley Art Centre Inc., 2015 © the artist

OPPOSITE PAGE BOTTOM Bedroom on 2nd level of the Hat Factory section of Olley's home studio, Duxford Street, Paddington, 2012 © Roslyn Sharp

Over the last few years, the Gallery has welcomed a fantastic line-up of contemporary artists to explore the re-creation and respond to it from the perspective of their own practice, including Brisbane-based artist Monica Rohan who undertook a residency in the Gallery's onsite Nancy Fairfax Artist-in-Residence Studio in 2014. During this time, Rohan responded to patterns in the re-creation of Olley's home studio – patterns on cushions, clothing, tablecloths and on this wallpaper. For this still life challenge we invite you to respond to Olley's wallpaper as you add to the growing narrative of contemporary responses.







ABOVE This month's still life challenge inspired by Olley's paintings and wallpaper

This month's still life challenge is inspired by wallpaper from Margaret Olley's bedroom, and inspiration for a number of her paintings. For this challenge we have coupled the wallpaper from Olley's bedroom with other objects from her home studio collection, including her mirror, postcard, decorative red box, green vase, shells and perfume bottles.



LEFT Margaret Olley  
*Dressing table* 1982  
oil on board  
76 x 101.5 cm  
Private collection  
© Margaret Olley Art Trust

BELOW Green vase, and round lapis lazuli jewellery container with lid, collection of significant objects, MOAC

FOLLOWING PAGE wallpaper from Margaret Olley's bedroom (detail)

Using Olley's wallpaper and this re-creation as your starting point, you can paint, draw, collage or print as you like. We hope you enjoy exploring the vibrant pattern and colour of this wallpaper. Perhaps you will create a self-portrait, a still life or something else of your own invention. Don't forget to share your artwork with us at **#unlockingmargarethouse**. Whatever you choose - we can't wait to see what you do!





