

MemoryScape

A dementia friendly learning resource.

A picture speaks a thousand words ...



The Comfort of Home

Tweed Regional Gallery Collection.

The Comfort of Home presents works from the Tweed Regional Gallery collection that explore the home as a sanctuary – our own individual corner of the world. The home is a place where we are free to express ourselves through actions, objects, adornments and ways of being.

Our homes are an extension of us. They are places of self-expression and self-nourishment. They act as our 'second skin', providing shelter, reassurance, and a space for us to relax. The physical home can be our refuge, but 'home' itself is much more than a structure or dwelling.



William Robinson b.1936
Sunny morning with room and verandah 2012
pastel on paper
Gift of the Friends of Tweed Regional Gallery and Margaret Olley Art Centre Inc., 2014
Tweed Regional Gallery collection

William Robinson shows us a view of his studio, a room where he creates.

- **Look at the pastel drawing and point out things you see.**
- **Discuss what time of day you think it is, what season could this be?**



Kristin Headlam b.1953
Self-portrait, in bed with the animals 1999
oil on canvas
Acquired as the Winner of the Doug Moran National Portrait Prize, 2000
Tweed Regional Gallery collection

The Artist Kristin Headlam sits comfortably at home with her pets. For many people, animals make a home.

- **Share your thoughts about animals in your life.**
- **Discuss the character of the animals in Kirstin Headlam's painting.**

Home can be culture, and home is a feeling.

For many First Nations peoples, Country is home. Country is a connection to ancestors and what provides a sense of peace and belonging. Country is more than a location, it is an omnipresence that guides, comforts and provides a feeling of home.

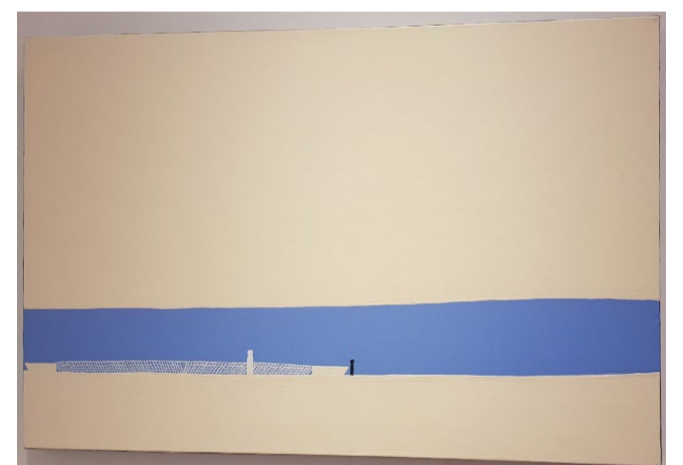
Artist Brad Turner says each piece he creates is a vibrant conduit that brings to life the rich stories, lands, waters, and people of his culture. In this collection, each piece serves as a Tjuringa – a sacred conduit through which ancestral wisdom and stories are passed from one generation to the next.



Brad Turner b.1978
Tjuringa Talara (Seasons of Wisdom) 2024
acrylic on canvas
Tweed Regional Gallery collection

- **Follow the lines and patterns in this work together, look at the different shapes and describe them.**
- **Share a story you know that has been shared with you, this could be a personal story or cultural story.**

Michael Philp b.1966
Looking for God 2018
Mending the net 2017
acrylic on canvas
Purchased through the
Tweed Regional Gallery Donations Fund,
2020. Tweed Regional Gallery collection



Michael Philp is a contemporary aboriginal artist from the Tweed Caldera, Much of Philp's youth was spent at the seaside or on the river. It was a place to connect with his dad, to spend time with friends and sometimes to reflect in solitude. With his signature minimalist style, Michael tells the story of his people.

Artist Michael Philp's work is very spacious showing expanses of sky and sea.

- **Discuss an aspect of land and environment that you like, if you were to draw it what shape would it be?**
- **What colour you would use to represent a place that is special to you?**

Home can provide us with a deep connection to someone, somewhere or something. When we experience the feeling of 'being at home', we are experiencing a familiar contentment, and this comfort allows us to relax.



Robyn Sweaney b.1957
The beach house 2009
synthetic polymer paint on linen
Purchased through the Tweed Regional Gallery Donations Fund, 2009
Tweed Regional Gallery collection

The Artist Robyn Sweaney is intrigued by the way people, in creative and resourceful ways, express themselves within the boundaries of their own environments.

- **Look closely at this painting and point out objects that tell you something about the people who live there. Discuss who they might be.**
- **Discuss how this house might be similar or different to a house you know.**



Cheryl McMaster b.1959
Siblings 2010
Digital Print 69 x 71 cm
Purchased as the Director's Choice Award through the Olive Cotton Award for photographic portraiture funded by the Friends of Tweed Regional Gallery & Margaret Olley Art Centre Inc., 2011 Tweed Regional Gallery collection

The Artist Cheryl McMaster has titled this photograph *Siblings*, showing her family in embrace after an emotional afternoon packing up and saying goodbye to their much-loved family home of thirteen years.

- **The three people in the portrait express different emotional responses. Discuss what they might be thinking or feeling.**
- **The bond of family can locate us to home, share who or what makes you feel at home?**

Memoryscape: Dementia friendly learning resource.

This self-guided exhibition tour sheet is a dementia friendly learning resource available for all visitors to use when exploring the exhibition.

Starting points

Conversation through art can evoke memories and emotions. Through art we can communicate about our experiences, reinforcing our sense of identity. This artwork reminds me of...

Pause

Taking the time for looking and contemplating in front of each artwork allows us to experience art in the moment, irrespective of prior knowledge or associations.

Connection

Responding to art together can bring us into meaningful engagement and relationship with family, friends and carers.

'Beautiful Questions'

Asking creative, open-ended questions invites the possibility of expression that is generative; building conversations of meaning, beauty, and value.

Letting the conversation flow

Through talking about ideas of art we can move on from the expectation of memory toward the freedom of imagination and a shared path of discovery.

Here are some general discussion questions you can ask about any artwork.

What do you see in this artwork?

How does this artwork make you feel?

Does this artwork remind you of anything?

What you like or dislike about this artwork?

What colours do you like in this artwork?

ACCESS ART